

מבוא צלמונה 3

כל היוקרה בירושלים



Floor Plan

Apt 9
4th floor
4.5 rooms



מבוא צלמונה 3

כל היוקרה בירושלים



052-5264045 ♦ 058-7175176

ken-hator.com | 08-9768129 | Shilat Industrial Zone, MAILBOX 87

מבוא צלמונה 3

כל היוקרה בירושלים

The Vision

Mavoh Tzalmona 3 in Jerusalem is a prestigious residential project in the heart of the Ramat Eshkol neighborhood, as part of an urban renewal process.

An impressive 7-story building with two separate entrances and impressive architectural facades are meticulously designed to blend into the luxurious and unique neighborhood.

A one way, quiet street, gives a sense of privacy with little to no car traffic and yet, is in the very heart of the neighborhood. The project has 11 new 3, 4, and 4.5-room apartments and 6-room luxury penthouses.

Every entrance has its own courtyard, a magnificent elevator and private storage units. In all the apartments there are large balconies for the benefit of the tenants.

Join the leading project in one of the most prestigious neighborhoods in Jerusalem.



צ'למזנה 3

כל היוקרה בירושלים

Apartment 9
4th floor
rooms 4.5

Flat area: 124.2 s.m
Balcony area: 8.69 s.m

Main technical specifications

Building

- 7-storey boutique building
- Luxuriously designed lobby with mirrors, lowered ceiling and lighting cornices
- Accessible and luxurious elevator designed from stainless steel and mirrors
- Landscaping and development are architecturally designed.
- The building is clad with prestigious natural Jerusalem stone.
- Electric back-up solar powered system - 150L boiler

Apartment

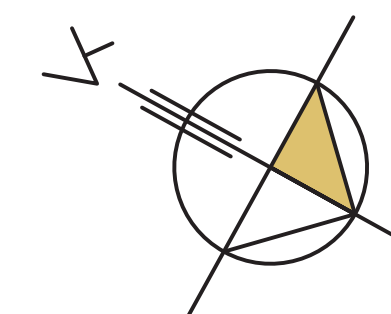
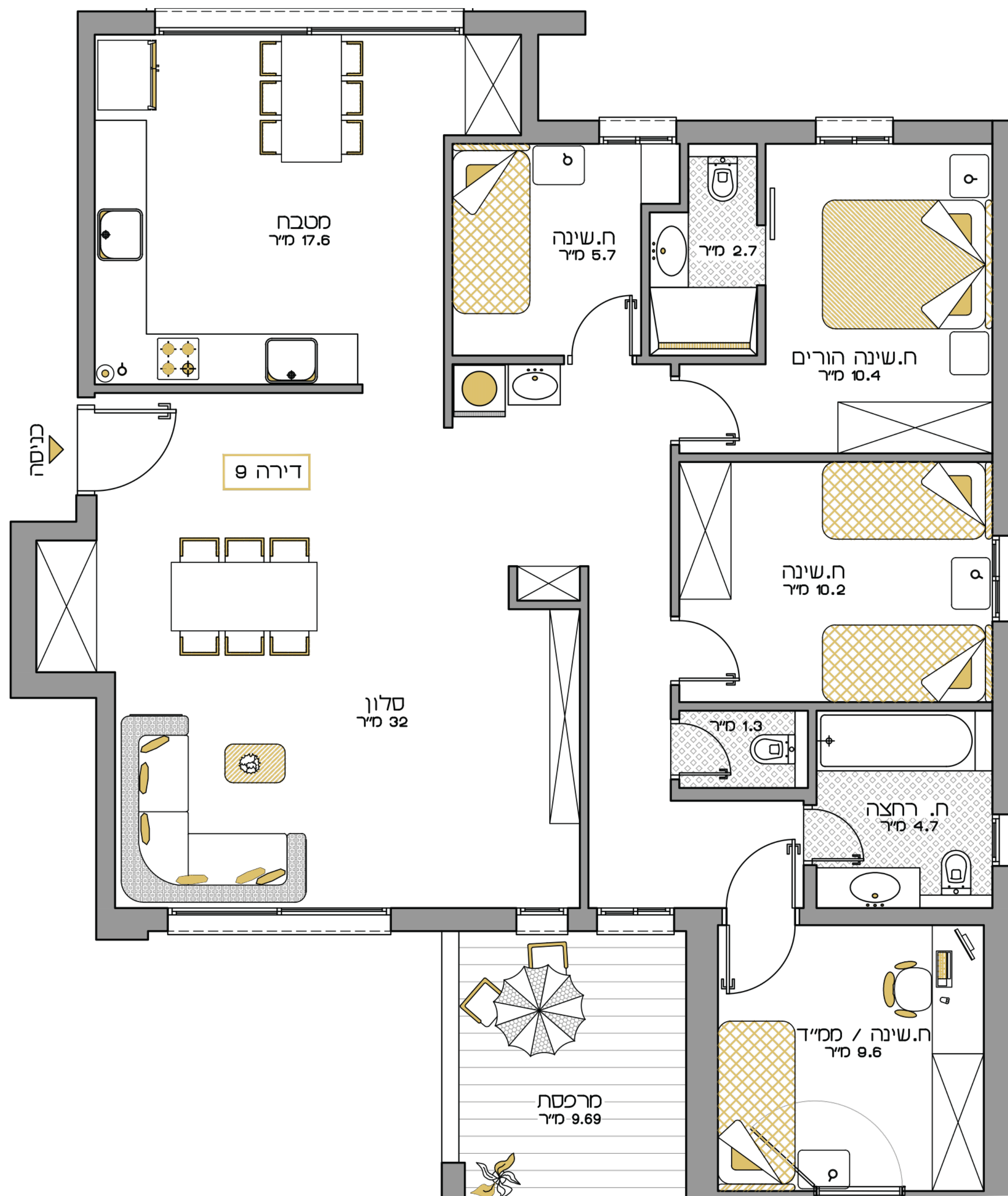
- Security door in every apartment
- 100% high quality flexboard interior doors
- Industrial lintels
- Exterior walls and partitions from concrete and Insulating blocks
- Quality windows with thermal insulation
- Succah balconies
- Color CCTV intercom
- Electric roller shutter in living room
- Network preparation in the apartment windows
- Standard saferoom including steel door
- 60x60 or 45x45 porcelain granite tiles throughout the apartment
- TV and telephone ports in each room
- Three phase 3X25 power
- Underground gas accumulator
- Underfloor heating in living rooms and wet rooms

Kitchen

- Top and bottom kitchen cabinets including BUILT-IN unit
- Bottom includes a quiet closing mechanism
- Caesar stone kitchen marble in a variety of shades
- Siliquartz or stainless steel kitchen sink with flat installation, 2 sinks and 2 taps
- Detachable faucet from nickel chrome
- Dishwasher preparation
- Preparation for central mini air conditioner

Bathrooms

- 33x33 bathroom ceramic flooring
- Wall cladding 63X31 from a variety of series
- Bathroom cabinet with integral surface in master bathroom
- Quality sanitary ware
- Hanging toilets with concealed tank
- Acrylic bathtub
- Top quality glass shower



FLOOR PLAN

